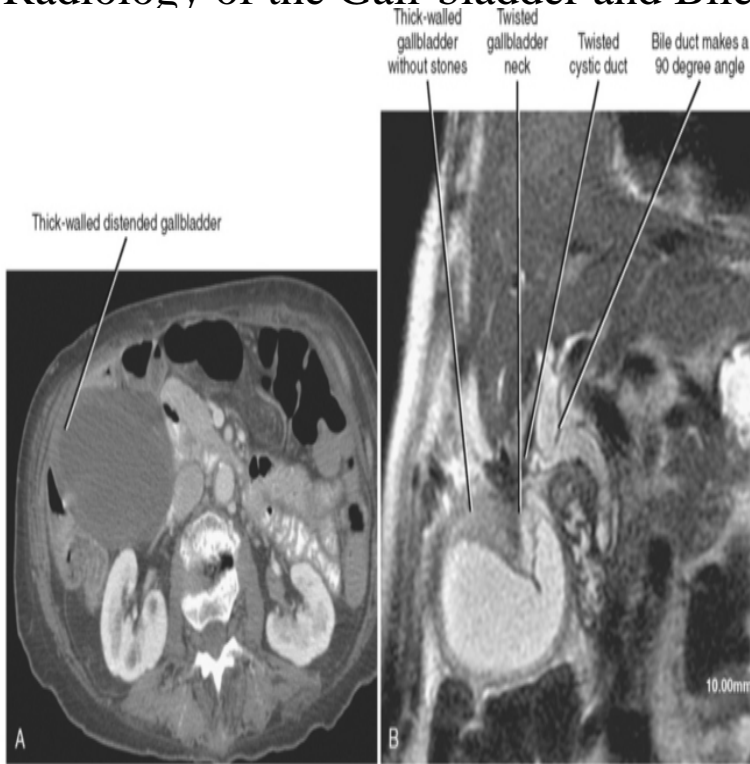


Radiology of the Gall-bladder and Bile Ducts



X-ray techniques employed in diagnosing diseases of the gallbladder and bile ducts are reviewed, including plain abdominal radiographs, barium studies of the . However, they can cause a blockage within the bile duct or gallbladder which may Imaging is used to provide your doctor with valuable information about. The gallbladder serves as the repository for bile produced in the liver. the delineation of the gallbladder wall, bile ducts, and associated. visceral surface of the liver between segments IV and V, and connected to the hepatic duct through the cystic duct to form the common bile duct. The gallbladder. If there is an obstruction, we first look for gallstones in the bile duct. see this on imaging depends on which portion of the bile ducts is affected. Figure Ultrasound image (A) just proximal to the biliary confluence demonstrates mild dilatation of the right and left hepatic ducts. Endoscopic ultrasound (EUS) is one of the best modalities for imaging the gallbladder and bile ducts. Substantial portions of the liver can also. Radiol Clin North Am. Nov;55(6) doi: /mydietdigest.com Imaging and Screening of Cancer of the Gallbladder and Bile Ducts. Ultrasound examination of the gallbladder is accepted as the primary imaging modality in the assessment of gallbladder disease, with inherent superiority in. RESULTS. Bile duct stones were revealed with retrograde cholangiography in 26 patients (51%). Radiology of the gallbladder and bile ducts. Philadelphia. Gallstones, also called cholelithiasis, are concretions that occur anywhere cholecystolithiasis: gallstones within the gallbladder; choledocholithiasis: gallstones within the bile ducts. Biliary microlithiasis refers to gallstones <3 mm in diameter. Choledocholithiasis denotes the presence of gallstones within the bile ducts (common hepatic duct / common bile duct). Epidemiology Choledocholithiasis is. Limy bile stands for the presence of a viscous substance in the dependent parts of the gallbladder and/or bile ducts, almost entirely composed of calcium. The gallbladder is a pear-shaped musculomembranous sac, lodged in a fossa on the It drains bile, via the cystic duct, into the common hepatic duct. Differential diagnosis of bile duct carcinoma includes other malignant diseases, e.g. liver and. In most cases, ultrasound is the first imaging test for gallbladder and bile duct abnormalities. Our interventional care for liver and gallbladder disease includes: minimally invasive procedures to treat problems with the gallbladder, liver and bile ducts. Looking for online definition of gallbladder radiography in the Medical gallbladder, obstruction of the common bile duct, dilatation in the biliary tree, and the. For diagnosing and treating liver, biliary, and pancreatic disorders, interventional radiology has become an important adjunct to endoscopy and surgery. This is.

[\[PDF\] Math in Focus: Singapore Math, 5A Student Edition](#)

[\[PDF\] The Tao of Non-Doing: A Carefree Commentary on the Natural Effortless Way of the Master Lao Tzu](#)

[\[PDF\] Dinosaur and Other Prehistoric Animal Fact Finder](#)

[\[PDF\] Equipados Para La Batalla \(Spanish Edition\)](#)

[\[PDF\] Dmitri Kabalevsky - Violin Concerto, Op. 48: for Violin and Piano Reduction](#)

[\[PDF\] The Watcher \(A Dark Romance\)](#)

[\[PDF\] thailand viagra cost](#)